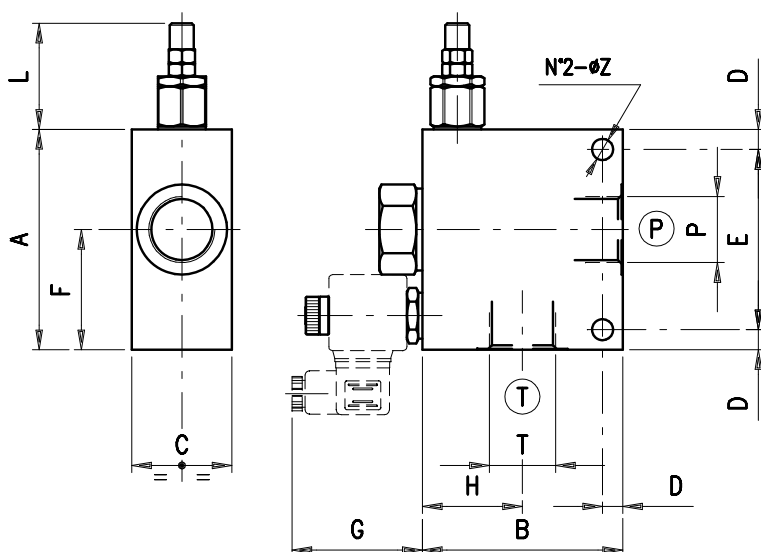


Rohrleitungsventile

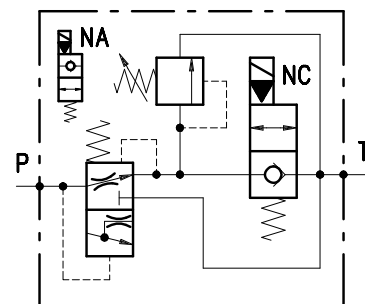
- Druckbegrenzungsventil direktgesteuert
mit elektrischem Entlastungsventil -



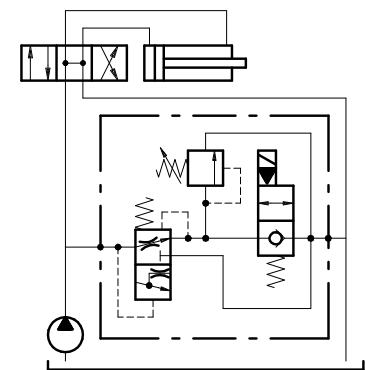
Bestellnr.	Typ	max. Durchfluss <i>l/min</i>	max. Betriebsdruck <i>bar</i>	Gehäuse	Code
230-0100-0600	VMP/VE 100/NA/03.TS.S	150	210	Alu	1116051102
230-0100-0605	VMP/VE 100/NC/03.TS.S	150	210		1116051103
230-0100-0610	VMP/VE 114/NA/03.TS.S	250	210		1116061102
230-0100-0615	VMP/VE 114/NC/03.TS.S	250	210		1116061103



VMP/VE	P	T	A	B	C	D	E	F	G	H	L	Z
100	G 1"	G 1"	110	100	50	10	90	60	65	50	53	10.5
114	G 1 1/4	G 1 1/4	130	130	70	12	106	72	65	62	53	12.5



• ASSEMBLY DIAGRAM



• DESCRIPTION

Pressure relief valve with electric bypass.

• OPERATION

Allows oil flow from P to T when pressure in P reaches the setting of the spring. Pick the solenoid UP (for NC types) or DOWN (for NA types) to allow for free oil flow from P into T.

• PERFORMANCE

Maximum flow:

- 150 l/min. for VMP/VE 100
- 250 l/min. for VMP/VE 114

Maximum Pressure:

- 210 bar (aluminium valves)
- 350 bar (steel valves)

Application range with standard springs:

- 5 ÷ 50 bar (test setting: 30 bar at 5 l/min.)
- 50 ÷ 200 bar (test setting: 160 bar at 5 l/min.)
- 150 ÷ 350 bar (test setting: 250 bar at 5 l/min.)

To perform setting of the valve see the pressure drop/ flow diagram.

Hysteresis: 90% of the valve setting for 1 L. flow capacity per minute.

Solenoids:

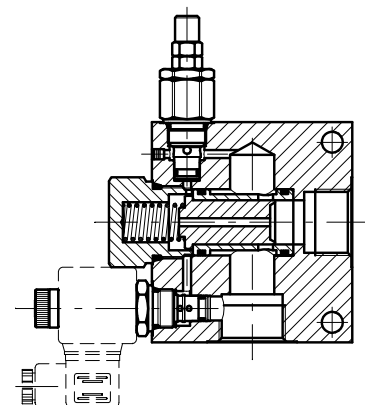
- VMP/VE 100 ÷ 114 (210 bar) BE/.... See page Z.2001.100
- VMP/VE 100 ÷ 114 (350 bar) BT/.... See page Z.2001.200

Oil leaks from P to T: disregardable.

Working temperature:

- min. -25°C max. 90°C with standard BUNA N gaskets

• CROSS SECTION



RECOMMENDATIONS

Fluid: best use mineral oil with viscosity ranging between 10 and 200 cSt.

Filter: see page Z.9000.000.

Weight:

- aluminium valves 1.92 kg and 3.13 kg for VMP/VE 100 and VMP/VE 114 respectively
- steel valves 3.92 kg and 7.63 kg for VMP/VE 100 and VMP/VE 114 respectively

Cartridge used:

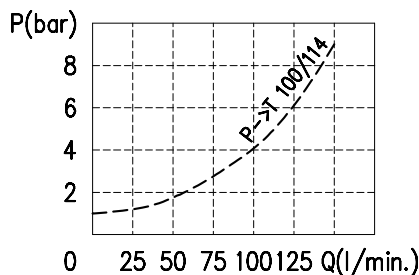
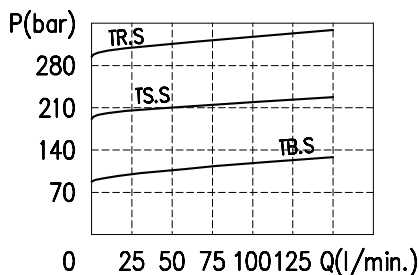
- Pressure relief see page D.1000.050
- Solenoid (210 bar) see page L.1100.100
- Solenoid (350 bar) see page L.1100.250

Material: internal components made out of high-grade steel duly treated and fabricated. For more information please ask our technical office .

Variations and modifications of technical features and dimensions are reserved. **OLEOSTAR S.p.A.** also reserves the right to stop production of each and any model listed in the catalogue with no notice.

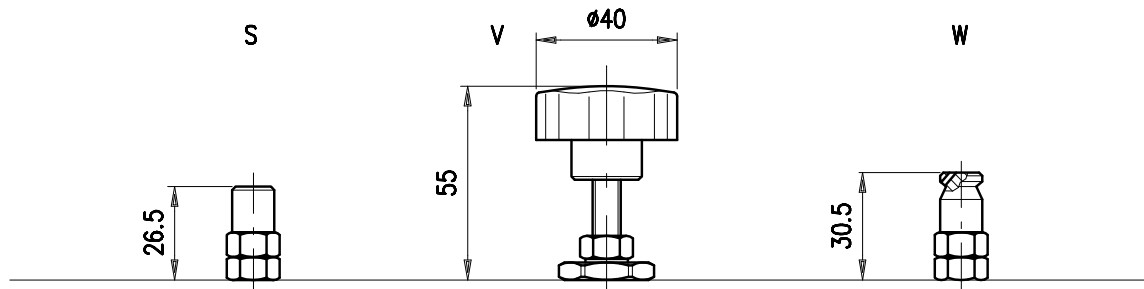
Copyrights on the text contained herein belong to **OLEOSTAR S.p.A.** . Partial and full reproductions or copies of this catalogue are forbidden.

RATING DIAGRAMS



Oil viscosity 46 cSt

ADJUSTMENTS



CODE NUMBER

